

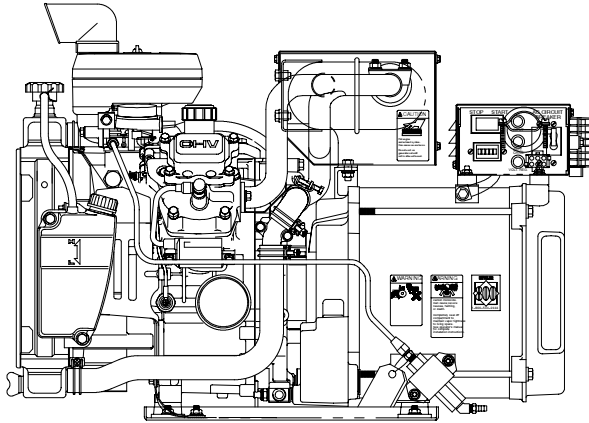
Model: 7ER (60 Hz)

6EFR (50 Hz)

KOHLER POWER SYSTEMS

Gasoline

9001
KOHLER
POWER SYSTEMS
NATIONALLY REGISTERED



Commercial Mobile Generator Set

Engine Features

- Gasoline powered
- Two cylinder
- Four cycle
- Automatic choke
- Water cooled, inline radiator cooling system
- Enclosed, integral muffler
- Emission compliant

Generator Features

- Remote connection availability
- Class F insulation
- 60/50 Hz capability
- Voltage adjustability
- Voltage regulation of $\pm 2\%$
- Frequency regulation of $\pm 5\%$
- Lifting eyes
- Fuel pump
- RFI suppression
- Captive, vibration-isolation mounting system

Generator Weights and Dimensions

	Standard Model	Wet Exhaust Model
Weight, kg (lbs.)		
Wet	93 (205)	N/A
Dry	91 (200)	N/A
Length, mm (in.)	768 (30.22)	787 (30.96)
Width, mm (in.)	427 (16.81)	488 (19.20)
Height, mm (in.)	504 (19.83)	504 (19.83)

See the drawings on the last page for detailed dimensions.

Generator Ratings

Model Series	Voltage	Hz	25°C (77°F) Amps	25°C (77°F) kW/kVA
7ER	120	60	58.33	7.0/7.0
	120/240	60	29.17	7.0/7.0
6EFR	110	50	54.55	6.0/6.0
	110/220	50	27.27	6.0/6.0
	220	50	27.27	6.0/6.0

RATINGS: Mobile continuous ratings per ISO 3046, ISO 8528-1, and Kohler ISO rating guideline 2.14. Obtain technical information bulletin (TIB-101) on ratings guidelines for complete ratings definitions.

Availability is subject to change without notice. Kohler Co. reserves the right to change the design or specifications without notice and without any obligation or liability whatsoever. Contact your local Kohler generator distributor for availability.

Optional Accessories

- Extended PTO shaft
- Remote start and meter panel kits
- Sender kit

Application Data

Engine

Engine Specifications	60 Hz	50 Hz
Manufacturer	Kawasaki	
Model	FD501D	
Type	4 Cycle	
Cylinders, number	2	
Displacement, ml (cu. in.)	437 (26.7)	
Bore and stroke, mm (in.)	67 (2.64) x 62 (2.44)	
Compression ratio	9.3:1	
Rated rpm	3600	3000
Max. power at rated rpm, HP	16	13.8
Cylinder block material	Aluminum	
Cylinder head material	Aluminum	
Piston rings	2 compression/1 oil control	
Crankshaft bearings, type	Insert	
Valve material	Steel alloy (JIS SUH3)	
Connecting rod material	Aluminum	
Governor, type	Gear-driven centrifugal	

Engine Electrical

Engine Electrical System	60 Hz	50 Hz
Ignition	Transistorized	
Starter motor	Bendix automotive type	
Spark plugs	Resistor-type RFI suppression	
Battery voltage (DC)	12	
Battery charging	15 amp	
Battery recommendation (min.)	260 CCA	

Fuel

Fuel System	60 Hz	50 Hz
Type	Single-barrel, horizontal carburetor	
Choke	Automatic, electric	
Fuel pump	Electric	
Fuel pump, max. lift, m (ft.)	0.9 (3)	

Fuel Consumption	60 Hz	50 Hz
Gasoline, Lph (gph) at % load		
100%	3.56 (0.94)	3.03 (0.80)
75%	2.91 (0.77)	2.65 (0.70)
50%	2.38 (0.63)	1.93 (0.51)
25%	1.97 (0.52)	1.51 (0.40)

Lubrication

Lubricating System	60 Hz	50 Hz
Type	Pressure	
Oil capacity with filter, U.S. L (qts.)	1.36 (1.44)	

Operation Requirements

Air Requirements	60 Hz	50 Hz
Engine combustion air requirements m ³ /min. (cfm)	0.7 (24)	0.6 (20)
Generator cooling requirements m ³ /min. (cfm)	2.6 (91)	2.1 (75)
Radiator fan airflow m ³ /min. (cfm)	72.6 (2563)	60.6 (2140)

Cooling

Cooling System	60 Hz	50 Hz
U.S. L (qts.)	2.08 (2.2)	
Heat rejected to cooling water at rated kW, wet exhaust Btu/min.	547	465
Engine water pump flow (gpm)	13.3	11.1

Exhaust

Exhaust System	60 Hz	50 Hz
Exhaust outlet size at hookup, mm (in.)	32 (1.25)	

Engine Features

- One-side serviceability of the air cleaner, carburetor, fuel filter, cooling system, and lubrication system
- Low oil pressure cutout
- High water temperature cutout
- Disposable oil filter
- Oil drain valve
- Full-pressure lube
- Replaceable air intake filter element
- Electronic fuel pump
- Antidieseling solenoid
- Solid-state ignition
- Integral 12-volt battery charger
- Attached overflow bottle

Controller Features

- Start/stop rocker switch
- Captive, rubber mounts to isolate vibration
- Safety shutdowns:
 - High water temperature
 - Low oil pressure
- External 6-pin connector for the remote panel harness
- Hourmeter for scheduling maintenance
- Starter interlock to prevent reengagement of the starter whenever the engine is running
- Plug/receptacle controller connections
- Terminal connections:
 - Clearly identified
 - Corrosion resistant
 - Eliminate the possibility of misconnection

Application Data

Generator Features

- The brushed, rotating field design permits power to be obtained from the stationary leads.
- The rotor and stator are vacuum-impregnated and coated with a high-bond epoxy varnish. The varnish helps prevent corrosion in high-humidity areas.
- The rotor is dynamically balanced to minimize vibration.
- The copper windings ensure minimal heat buildup. The insulation meets NEMA standards for class F insulation.
- Directly connected to the engine, the generator has sealed precision bearing with a precision-machined steel sleeve in the end bracket (or the end bearing tolerance ring) to prevent shaft misalignment and extend bearing life.
- The circuit breaker protects the generator from extreme overload.
- The generator is mounted on a drip-proof tray.
- The generator is equipped with a four-lead reconnectable stator.

Accessories

Remote Start Panel

Allows starting/stopping from a location remote from the generator set. Supplied with a 4.6 m (15 ft.) connection harness. Overall mounting dimensions are 103 mm (4 1/16 in.) by 54 mm (2 1/8 in.) with a minimum mounting depth of 57 mm (2 1/4 in.).

Remote Start and Two-Meter Panel Kit

Allows starting/stopping from a location remote from the generator set. The illuminated gauges include an engine oil pressure gauge and a water temperature gauge. Overall dimensions are 152 mm (6 in.) by 152 mm (6 in.) with a minimum mounting depth of 70 mm (2 3/4 in.). Requires a remote connection/extension harness and sender kit.

Remote Start and Four-Meter Panel Kit

Allows starting/stopping from a location remote from the generator set. The illuminated meters/gauges include a DC voltmeter, an engine oil pressure gauge, a water temperature gauge, and an hourmeter that records the total generator set operating hours. Overall dimensions are 229 mm (9 in.) by 152 mm (6 in.) with a minimum mounting depth of 102 mm (4 in.). Requires a remote connection/extension harness and sender kit.

Sender Kit

Provides gauge senders for the remote start and two-meter panel kit and the remote start and four-meter panel kit. The gauge sender kit is required to make the oil pressure and water temperature gauges functional.

Remote Connection/Extension Harness

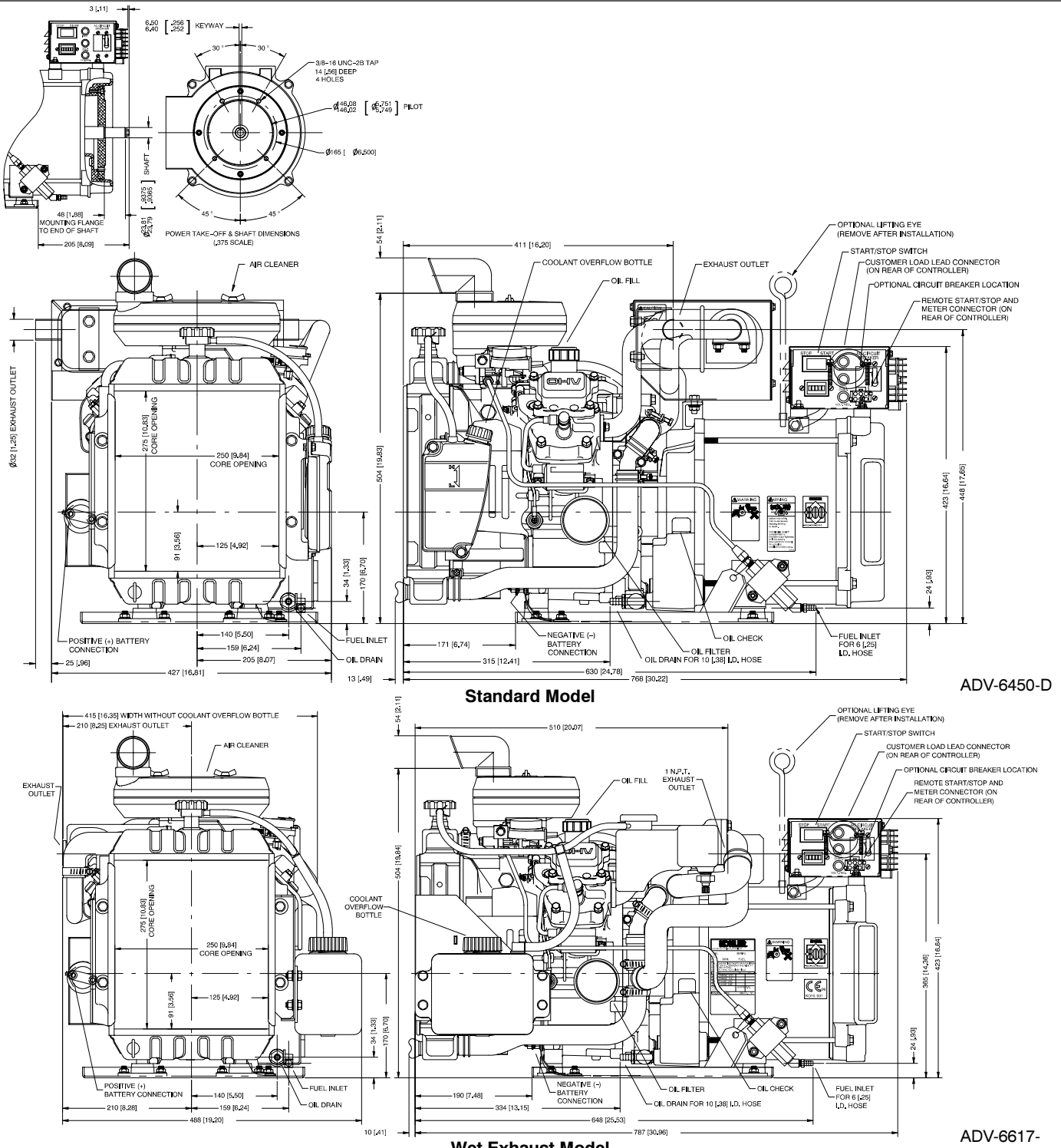
Provides additional wiring between all remote panels and the controller connector. One is required for each remote start and meter panel kit. Limit extensions to a total of four kits and 23 m (75 ft.).

12-Inch Remote Wiring Harness

Equipped with a 6-pin connector on one end that is keyed to the controller box connector. Equipped on the other end with pigtailed for connection to a customer-supplied start switch, generator ON light, hourmeter, etc.

Line Circuit Breakers

Protects the generator from extreme overload.



NOTE: Dimensions in [] are inch equivalents.

NOTE: This drawing is provided for reference only and is not intended for installation planning. Contact your local distributor for more detailed information.

© 1999, 2000, 2002 by Kohler Co. All rights reserved.

DISTRIBUTED BY: